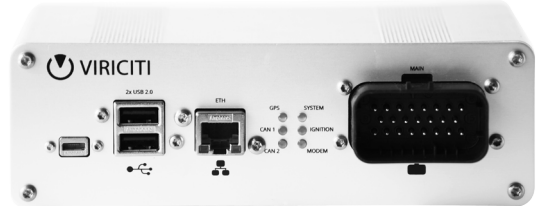


This is the DataHub

The **DataHub** is ViriCiti's own **plug & play** on board solution. The DataHub is small, energy efficient and easy to install.

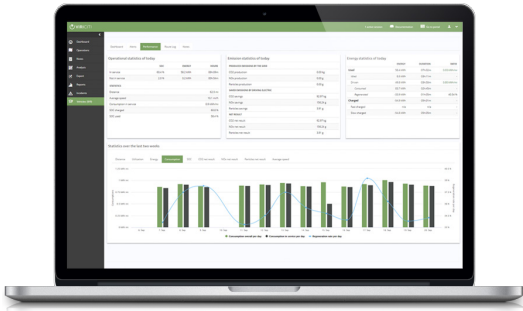
Due to its unique firmware, the DataHub is highly flexible and allows you to run your own programs on its **AppLayer**.



The AppLayer

Use the DataHub as a platform for all your in-vehicle systems, e.g. ITCS, ticketing machines.

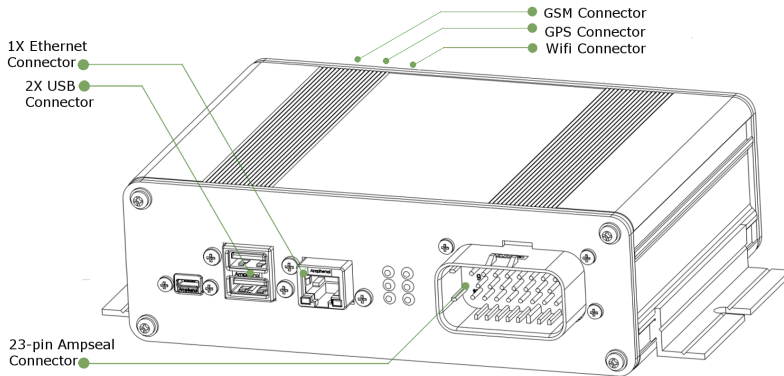
Build your own applications in any preferred language and run it on your datahub.



Technical Details

- + Always in compliance with the highest security standards [2048 bit encrypted].
- + Crash-resilient due to automatic recovery.
- + Connectivity through Ethernet, Wireless or 4G.
- + The built-in sensors give you a comprehensive overview of your vehicle.

Visit www.viriciti.com/datahub
for more information



System	CPU	800 MHz 2core ARM processor (i.MX6)
	RAM	1 GB DDR
	On-board Memory	8GB (eMMC)
	System Memory	8GB – 128 GB (SD card size)
	System Sensors	GPS sensor Gyro sensor Barometric sensor 3 Axis Accelerometer
	Operating System	Embedded Linux (kernel 4.1.15)
Communication	Ethernet	1Gb/ps
	Wireless	Wi-Fi 802.11 a/b/g/n (2.4 + 5GHz)
Connectors	Cellular	GSM/UMTE/LTE (2G/3G/4G)
	TE Connectivity, Ampseal (23 pins)	1 x RS485 6 x Analog Inputs (0-10 V) 2 x Analog Outputs (0-10 V) 5 x Digital Outputs 2 x CAN
	LAN Connector	1 x RJ45
	USB	2 x USB 2.0
	Antenna Connectors	1 x WLAN (SMA) 1 x 2G/3G/4G Antenna (FME) 1 x GPS (SMA)
	Other	Dimensions (L x W x H)
	Weight	500 gr
	Operating temperature	-40 °C to +85 °C
	LEDs	6x RGB
Certification	Automotive Standards Environmental Standards	R_10_C5 Addendum 9: Regulation No. 10 J1455:2017 Part 2-64 IP 65
	CE	EN 301 489-1 V2.2.0 EN 301 489-50 V2.2.0 EN 301 489-52 V1.1.0 ETSI EN 300 440 V2.1.1.